

South Wye Transport Package

Active Travel Improvements Consultation

September 2016

Introduction

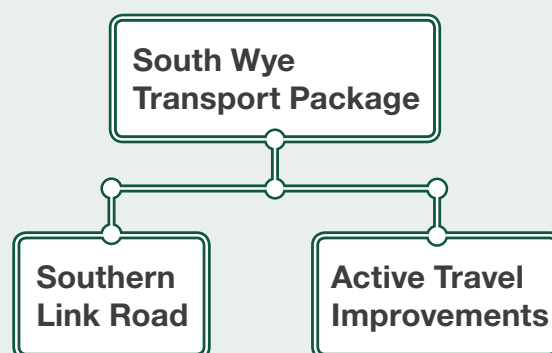
What is the South Wye Transport Package?

The South Wye Transport Package (SWTP) aims to promote economic growth within Hereford while tackling specific problems in the South Wye area. The aim is to promote economic development by unlocking the barriers to economic growth, including land at the Hereford Enterprise Zone (HEZ).

The SWTP objectives are to:

- Reduce congestion and delay
- Enable access to developments such as the HEZ
- Reduce the growth in emissions
- Reduce traffic noise
- Reduce accidents
- Encourage physical activity

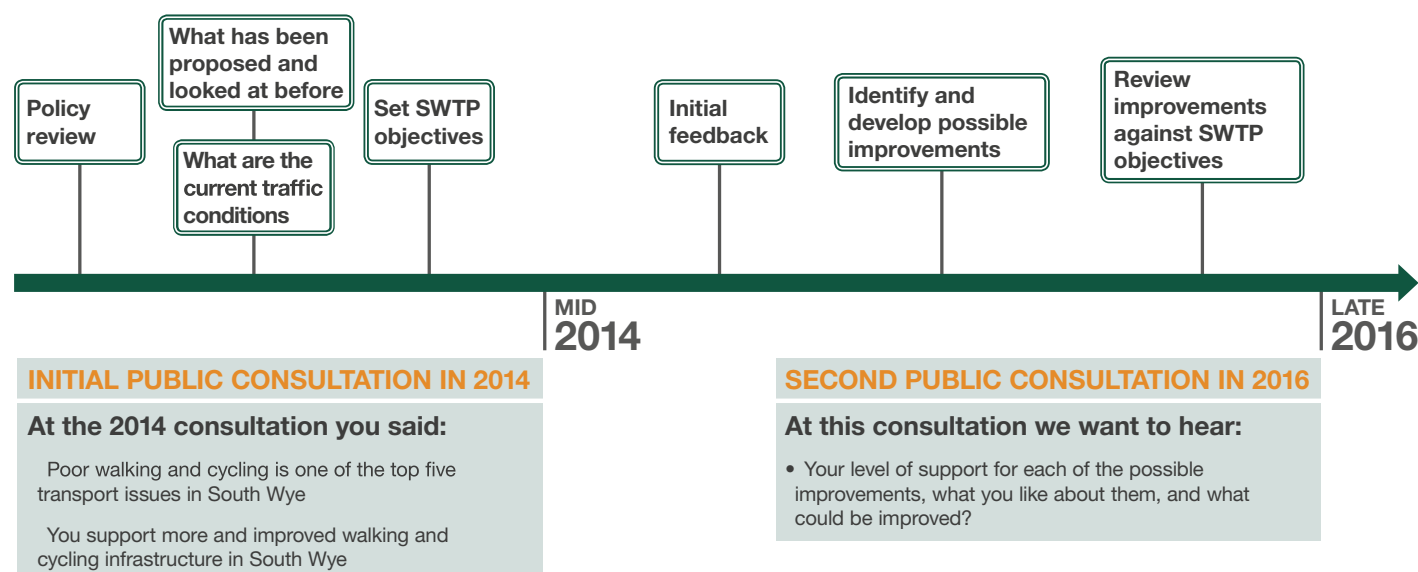
The South Wye Transport Package (SWTP) comprises:

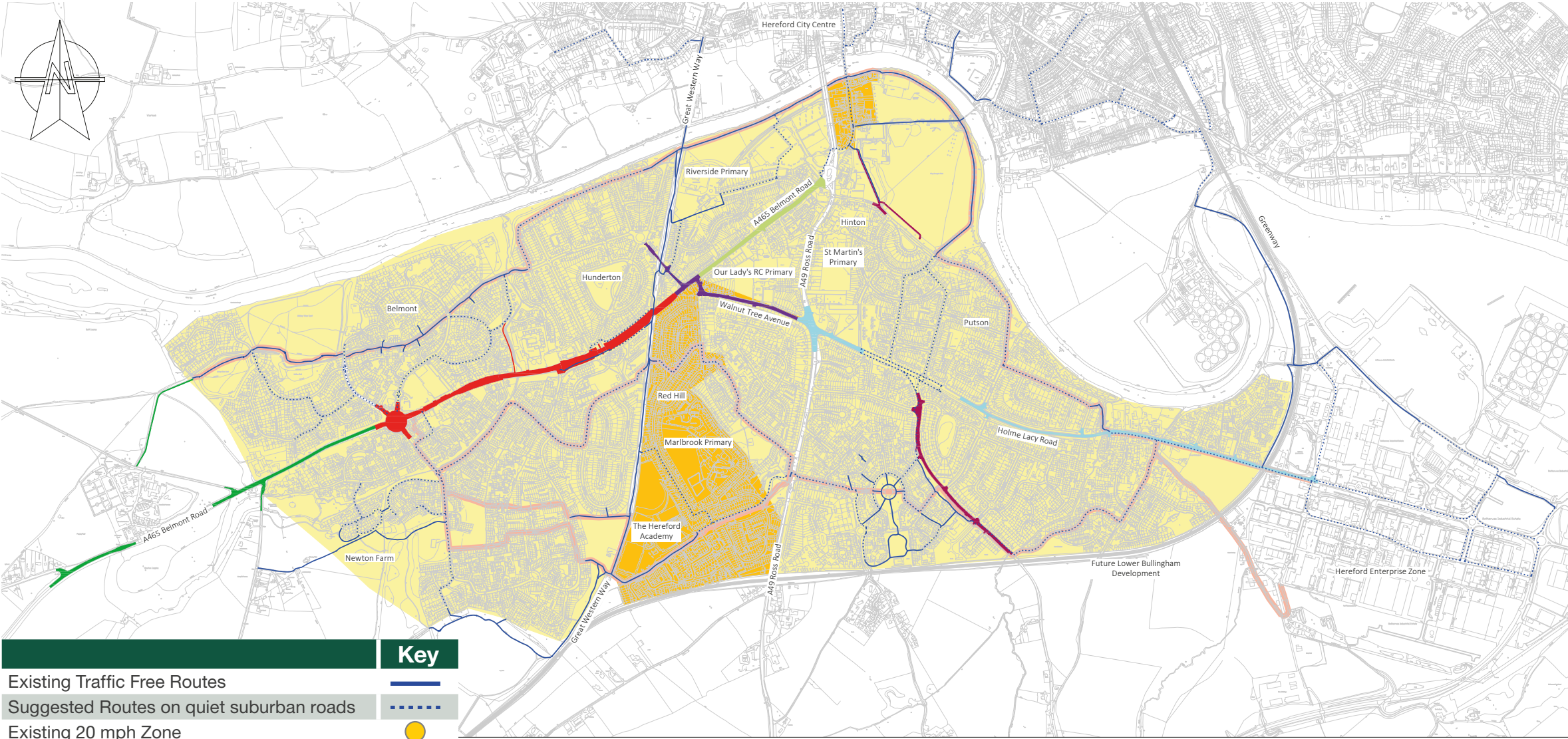


The Southern Link Road (SLR) has recently been granted planning permission and the delivery of the scheme continues.

Why are active travel improvements proposed?

Herefordshire Council is looking at ways to improve walking and cycling in South Wye, Hereford. This consultation is specifically seeking your views on a range of proposed active travel improvements.





Possible improvements and SWTP objectives		Reduce congestion and delay	Enable access to develop-ments such as the HEZ	Reduce the growth in emissions	Reduce traffic noise	Reduce accidents	Encourage physical activity
20 mph residential areas		✓	✓	✓	✓	✓	✓
Belmont Road bus priority measures		✓	✓	✓		✓	✓
Belmont Road walking and cycling improvements		✓	✓	✓	✓	✓	✓
Belmont Road weight restriction		✓		✓	✓	✓	✓
Belmont Road (West) walking and cycling improvements		✓		✓	✓	✓	✓
Better walking and cycling routes to HEZ		✓	✓			✓	✓
Hoarwithy Road and Hinton Road walking and cycling links		✓	✓	✓	✓	✓	✓
Holme Lacy Road—further walking and cycling improvements		✓	✓	✓	✓	✓	✓
Walnut Tree Avenue / Hunderton Road traffic reduction		✓	✓	✓	✓	✓	✓

South Wye Active Travel Improvements

Public exhibition venues and times

If you would like more information on the possible improvements summarised in this leaflet please come along to one of the exhibitions and/ or visit the SWTP website <https://www.herefordshire.gov.uk/south-wye-transport-package>

Date	Venue	Time
Monday 14th September 2016	The Three Counties Hotel Belmont Road Hereford HR2 7BP	10am to 8pm
Wednesday 21st September 2016	Hereford Business Solutions Centre Skylon Court Coldnose Road Hereford HR2 6JL	10am to 8pm
Monday 26th September 2016	The Kindle Centre ASDA Supermarket Belmont Road Hereford HR2 7JE	10am to 8pm

All venues are fully accessible and have car and cycle parking

Online

Consultation information and the consultation questionnaire will be available online at:

<https://www.herefordshire.gov.uk/south-wye-transport-package> from Wednesday 14th September 2016.

Display exhibition

There will be an information display at Tesco Superstore, Abbotsmead Road, Belmont, from the 29th September until 12th October. The information will be displayed at Hereford Leisure Pool, St Martins Avenue, Hereford, from the 12th October until the consultation closes on **Tuesday 25th October 2016**.

What happens next?

Late 2016

- Public consultation
- Review of consultation feedback
- Cabinet considers Consultation Report

2017 and onwards

- Preliminary design
- Further community consultation
- Detailed design and implementation



www.facebook.com/hereford2020



www.twitter.com/hereford_2020

Alternative formats of this leaflet are available upon request.